



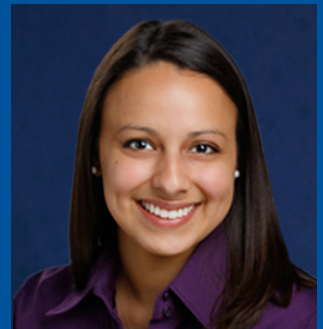
PMA™

WISC  
Wisconsin Investment Series Cooperative®

# Haley Treba Joins the PMA and WISC Team

PMA, a premier full-service provider of financial and advisory services to local governments, is pleased to announce that **Haley Treba** has joined the team as **Institutional Investment Specialist**. She will partner with the **Wisconsin Investment Series Cooperative (WISC)** to serve public entities, including school districts, municipalities, counties and technical colleges, throughout the state of Wisconsin, assisting with day-to-day operations for WISC Participant accounts.

Prior to joining PMA, Haley worked as an account representative in employee benefits for Wisconsin school districts and municipalities, specializing in Life and Disability insurance. Her experience and commitment will allow WISC to further its relationship as a trusted partner to local Wisconsin communities.



Haley received her Bachelor of Science in Mathematics through Edgewood College and The University of Wisconsin – Madison.

“Haley’s understanding of Wisconsin school finance brings the level of expertise needed to help deliver WISC’s unique set of investment portfolios and service programs,” said Erik Kass, Director. “We are thrilled to have her on the team, and look forward to serving Wisconsin public entities.”

Haley is based in PMA’s Milwaukee office.



**Erik Kass**  
Director, Public Finance



**Brett Weeden**  
Vice President,  
WI Investment Services



**Josh Barbian**  
Associate Vice President,  
WI Investment Services



**Matt Silkey**  
Associate Vice President,  
WI Investment Services



**Elizabeth Castillo**  
Institutional  
Investment Specialist



**Charlie Verbos**  
Institutional  
Investment Specialist



**Phil Hohlweck**  
Director, Public Finance



PMA®



**Brian Della**  
Director, Public Finance



**Alex Graf**  
Public Finance Associate